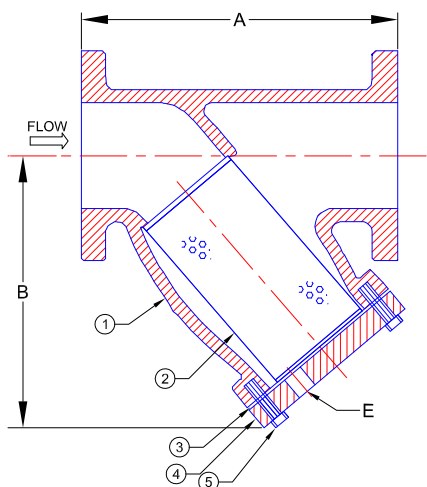


## YBF1 & YBF2

Y-STRAINER, 150# & 300# FLANGED

CAST NICKEL ALUMINUM BRONZE (ASTM B 148, C95800)



### STANDARD SCREENS

SIZE (in)	SCREEN PERFORATION			
	STEAM		LIQUID	
	(in)	OPEN AREA	(in)	OPEN AREA
1/2 TO 4	3/64	33%	1/16	30%
5 TO 10	3/64	33%	1/8	43%
12	1/16	30%	1/8	43%

The default standard screens are for liquid service unless specified. Many other options are available.

### PARTS LIST

ITEM	DESCRIPTION	MATERIAL
1	BODY	NICKEL ALUMINUM BRONZE (ASTM B148, C958)
2	SCREEN (BASKET)	STAINLESS STEEL (304)
3	GASKET	STAINLESS STEEL-SPRIAL WOUND (316)
4	COVER	NICKEL ALUMINUM BRONZE (ASTM B148, C958)
5	CAP SCREW	STAINLESS STEEL (ASTM A 194, GRADE8)



### DIMENSIONS & WEIGHT

SIZE (in)	A		B		E		WT (lbs)	
	150#	300#	150#	300#	150#	300#	150#	300#
1/2	5 7/8	6	3 1/4	3 1/4	3/8	3/8	7	12
3/4	7 3/8	7 13/16	3 3/4	3 3/4	1/2	1/2	13	18
1	7 3/8	7 13/16	3 3/4	3 5/8	1/2	1/2	13	18
1-1/4	6 5/8	8	4 5/16	4 1/2	1/2	1/2	17	26
1-1/2	6 11/16	8 1/8	4 5/16	4 3/4	1/2	1/2	17	26
2	7 7/8	9	5 1/4	6	1/2	1/2	28	28
2-1/2	9 3/4	10 5/8	6 1/2	7 3/8	1	1	38	48
3	10	12 1/2	7	9 1/16	1	1	64	75
4	12 1/8	15 1/8	8 1/4	10 7/8	1-1/2	1-1/2	84	110
5	15 1/2	18 5/8	11 1/4	13 9/16	2	2	139	164
6	18 1/2	19 1/8	13 1/2	15 7/8	2	2	160	212
8	24	25 3/16	16 1/2	16 1/2	2	2	296	359
10	27 5/8	29 1/8	19 3/8	19 3/8	2	2	408	493
12	32 1/2	34	22 5/8	22 5/8	2	2	798	938

### FLOW COEFFICIENTS

SIZE (in)	Cv	SIZE (in)	Cv
2	62	6	942
2-1/2	98	8	942
3	155	10	1572
4	269	12	2261
5	364		

### SCREEN AREA (150#)

SIZE (in)	SQ IN	SIZE (in)	SQ IN
2	26	6	227
2-1/2	45	8	356
3	57	10	560
4	86	12	661
5	156		

See elsewhere for calculating Net Free Area.

### BODY PRESSURE & TEMPERATURE RATINGS - NON SHOCK

NOM. RATING	MEDIA	1/2" to 12"
150#	STEAM	150 PSI @ 406F
150#	W.O.G.	225 PSI @ 150F
300#	STEAM	360 PSI @ 500F
300#	W.O.G.	515 PSI @ 100F